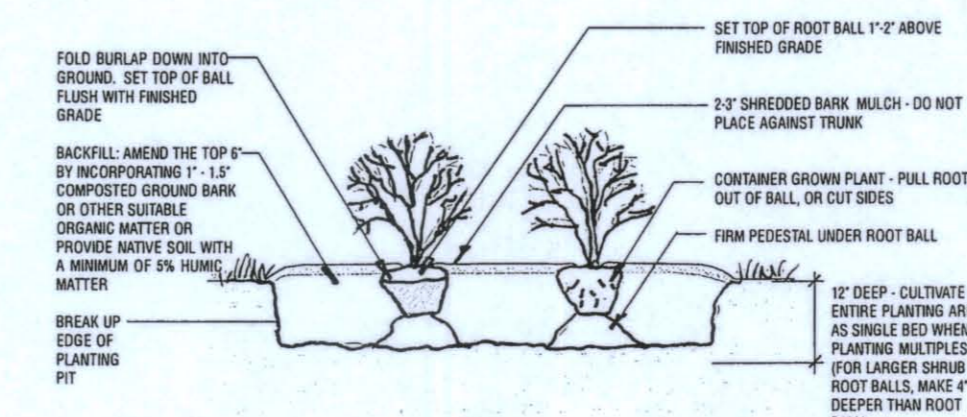


Notes:

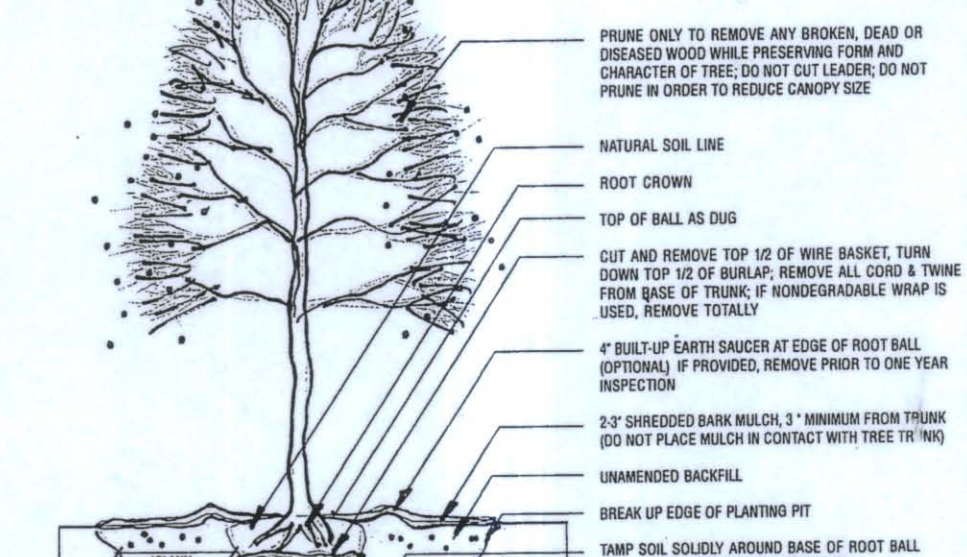
- All site information represented on this plan is illustrative, and must be verified by the engineer and/or the contractor. Written specifications shall take precedence over representations on drawings.
- Base plan information from:
  - "Site Plan in Harvard, MA for The Virginia Thurston Healing Garden" prepared by David E. Ross Associates, Inc. December 2007
  - "Schematic Plan" prepared by Bayleaf Studio, July 30, 2008

Shrub Planting Detail

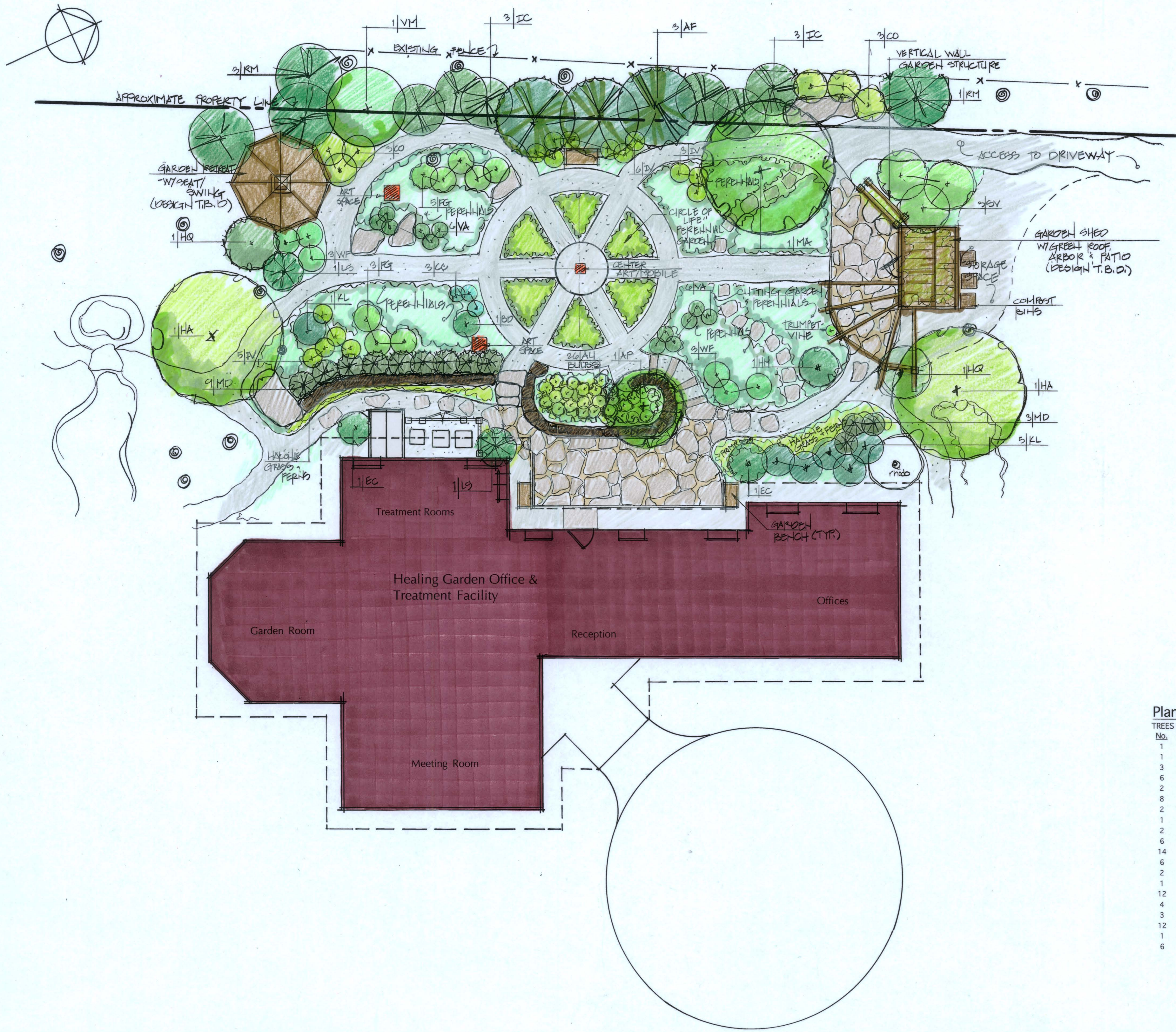


- NOTES
- All shrubs shall conform to the standards set forth in the most recent American Standard for Nursery Stock published by the American Association of Nurserymen (A.A.N.S.).
  - Soil analysis shall be obtained prior to planting. Soil shall be amended as recommended.
  - Soil preparation of beds is highly preferred to individually dug holes.

Tree Planting Detail



- NOTES
- Contractor to verify that adequate drainage exists prior to planting.
  - Do not wrap trunk of tree.
  - Staking of trees is not recommended, except on windy sites or for large evergreen trees. Staking of trees in flexible straps - not rope and wire - should be used and must be removed at appropriate time. Property Owner is responsible for replacement of destroyed or damaged trees.
  - All trees shall conform to the standards set forth in the most recent American Standard for Nursery Stock published by the American Association of Nurserymen (A.A.N.S.).
  - Trees with root flare covered by more than 1.5" of soil will be rejected prior to installation.



Plant List

TREES & SHRUBS (B&B unless otherwise specified)

No.	Key	Botanical Name	Common Name	Size	Remarks
1	AP	Acer p. dissectum cultivar	Threadleaf Japanese Maple	speciman	Feathery leaves/cascading habit/4 ft.
1	BD	Buddleia davidii cultivar	Butterfly Bush	#3 pot	Summer blooms/butterflies/6 ft.
3	CC	Caryopteris clandonensis	Bluebeard	#3 pot	Late summer, blue flowers/2 ft.
6	CO	Cornus alba 'Ivory Halo'	Red Twig dogwood	#7 pot	Bright red twigs/green & white leaves/6 ft.
2	EC	Enkianthus c. 'Red Velvet'	Enkianthus	#7 pot	Pink flowers late May/fall color/8 ft.
8	FG	Fothergilla gardenii	Dwarf Fothergilla	#5 pot	Bottlebrush flowers May/fall color/4 ft.
2	HA	Halesia carolina	Silverbell	8-10 ft.	Multi-stemmed/white, bell flowers May/18 ft.
1	HM	Hydrangea m. 'Lady in Red'	Hydrangea	#7 pot	Pink-white spring flowers turn burgundy/4 ft.
2	HQ	Hydrangea q. 'Snowflake'	Oakleaf Hydrangea	#7 pot	White summer flowers/ 8 ft.
6	IC	Ilex crenata 'Steeds'	Steeds Holly	#15 pot	Upright pyramidal evergreen/ 8 ft.
14	IV	Ilex verticillata 'Red Sprite'	Compact Winterberry	#5 pot	Bright red winter berries/ native/4 ft.
6	KL	Kalmia latifolia 'Sarah'	Mt. Laurel	#7 pot	Red buds to reddest, June flowers/6 ft.
2	LS	Leucothoe 'Girard's Rainbow'	Leucothoe	#5 pot	Multicolored, evergreen/arching/4 ft.
1	MA	Malus 'Donald Wyman'	Crabapple	2.5-3" cal.	Pink buds white flowers May/red fruit/20 ft.
12	MD	Microbiota decussata	Siberian Cypress	#3 pot	Soft, flat, groundcover/ 2 ft.
4	RM	Rhododendron 'Olga Mezitt'	Rhododendron	2.5-3 ft.	Pink May flowers/fall color/6 ft.
3	SV	Syringa 'Beauty of Moscow'	Lilac	4-5 ft.	Double white late May/12 ft.
12	VA	Vaccinium angust. 'Brunswick'	Lowbush Blueberry	#1 pot	Glossy leaves/groundcover/8 in.
1	VM	Viburnum p. l. 'Mariesii'	Doublefile Viburnum	4-5 ft.	White May flowers/red fruit/10 ft.
6	WF	Weigela florida 'Midnight Wine'	Weigela	#5 pot	Rosy flower May-June/burgundy foliage/2 ft.

Client:  
Virginia Thurston  
Healing Garden  
Harvard, MA

Drawing Title:  
Sensory  
Garden Design

  
Lorayne Black ASLA  
Landscape Architect

phone: (978) 302-0448  
fax: (978) 448-4104  
EMAIL: L.Black@groton.org

P.O. Box 595, Groton, MA 01450  
www.lorayneblack.com

Date: Spring 2010  
Scale: 1/8" = 1'-0"

Revisions
